



THE NORFOLK ANGLERS CLUB

WIRELINE

SEPTEMBER 2019

What's Inside

Guest Speaker: William "Billy" Ragulsky, Fishing the Chesapeake Bay Bridge Tunnel throughout the season

Fishing Tips: Evolution of a Fisherman; Jay Brooks, *Smoke Show Sportfishing*

Fishing Reports:

- Chesapeake Bay/CBBT; Flounder, Spanish Mackerel, Bluefish, Rockfish, Cobia
- Lynnhaven Inlet; Speckled Trout, Puppy Drum
- Little Creek; Speckled Trout, Spot, Croaker, Puppy Drum, Black Sea Bass
- Offshore/Norfolk Canyon; Golden & Blueline Tilefish, Blackbelly Rosefish
- North Carolina/Oregon Inlet; Blueline Tilefish, Mahi
- New York/1,000 Islands; Smallmouth Bass
- California/ San Diego; Yellowtail, Bluefin Tuna, Yellowfin Tuna

Leadership Notes...

Fellow Norfolk Anglers,

One of the fantastic events our club supports is the Annual SeaTow Hampton Roads Holiday "Stuff-a-Boat" Toy Drive. Each year SeaTow collects new and unwrapped toys at angler club meetings, boating clubs, and businesses then delivers them to the United States Marine Corps Reserve Toys-for-Tots Campaign. Last year they collected almost 1,900 toys for children in Hampton Roads. I hope that you'll be generous this year and pick up a few (Okay, perhaps more than a "few") new and unwrapped toys and bring them to the October meeting. Thank You again for your Support!

- Will



Meeting

William "Billy" Ragulsky, *Fishing the Chesapeake Bay Bridge Tunnel throughout the season*

Nearly 18 miles long, 2 tunnels, and 4 man-made island, the Chesapeake Bay Bridge Tunnel represents a diverse ecosystem. Join us at the September meeting to hear "Billy" Ragulsky share his experience fishing a wide variety of species and how the fishing opportunity changes over the spring-summer-fall fishing season around the Bridge Tunnel.



Important:

Date of next meeting - Monday, 9 September at 7pm

Location:

Teppanyaki Buffet & Grill

7525 Tidewater Drive, Norfolk, VA 23505

Publishers NOTES

Editor:

Wendy Bransom

NorfolkAnglersClubEditor@gmail.com

NAC OFFICERS

President:

Will Bransom

Vice President:

Henry Troutner

Treasurer:

Ned Smith

Secretary:

Ike Eisenhower

Events Coordinator:

Mike Hubert

Assistant Events Coordinator:

Vacant

Guard/Greeter:

Ben Capps

Member at Large:

Alex Perez

Webmaster:

Pat Hirsch

pfhirsch@yahoo.com

Contact us at;

NorfolkAnglersClub@gmail.com

Norfolk Anglers Club

P.O. Box 8422

Norfolk, Virginia 23503-0422

NORFOLK ANGLERS



www.NorfolkAnglersClub.com

Club Calendar

September

Mon, September 9th, Club Meeting
Mon, September 9th, Recreational Fishing Advisory
Board Meeting at VMRC
Mon, September 9th, ASMFC Striped Bass DRAFT
Addendum VI Public Hearing at VMRC
Tues, September 24th, VMRC Meeting



Many Thanks to the Norfolk Anglers Club members (L-R; Mike Wright, Debbie Wright, Greg Rogers, Henry Troutner, Mary Troutner, Paul Harris, and Will Bransom) for coming out to fish in the first Club Head Boat Challenge. Anglers from the southside fishing clubs came together aboard the Judith Ann for a day of fishing. The weather was great though the fishing at times was a bit slow. The Captain had us fishing around the Chesapeake Bay Bridge Tunnel, CBBT Islands, and a few other spots along the way. We had a great time fishing among friends and with the other club members for the day. Thanks to Denny Dobbins with Portsmouth Anglers Club for setting the event up for all the clubs.

- Will Bransom



Norfolk Anglers Club

www.norfolkanglersclub.com

Fishing Tips...

Evolution of a Fisherman from Kayak to Offshore Fishing with Jay Brooks, *Smoke Show Sportfishing*



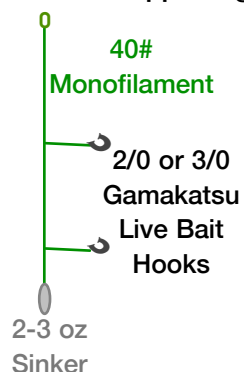
Jay Brooks shares his experience fishing from various platforms, beginning with kayak fishing, moving through center console boats, to a 36 Custom Jarret Bay Sport Fishing vessel and establishing a Charter Sportfishing Operation.

Jay explained with every fishing platform an angler fishes, they gain experience for better fishing as well as a boat operator. Each boat, including kayaks, have their own uniqueness in how they handle seas, the wind, and how they can be fished. He explained when you're kayak fishing, while you can get into areas most boats dare not try, you're also exposed to the environmental conditions more than any other vessel. He recommends anglers always check the wind and current predictions carefully before heading out. While each angler has their preference fishing the incoming or outgoing tide, being well-informed of conditions and how they may change during the trip can make the difference.

Kayak fishing for Sheepshead

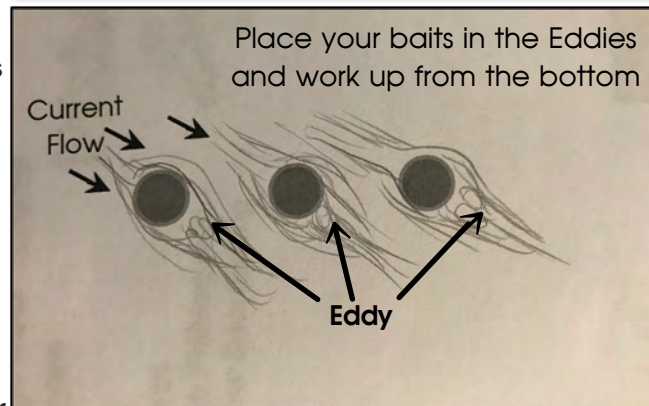
One of the best platforms to target sheepshead along the pilings is a kayak. Jay explained that over time fishing technique will change with experience gained targeting a particular species in varying conditions. For sheepshead, Jay will fish the entire water column beginning on the bottom. He uses a 2" double dropper rig tied with 40# monofilament line. The drop to the weight is 3-4 inches with 12-18 inches separating the two drops and another 18 inches to the mainline. Anglers will want to use as little sinker weight as possible, typically no more than 3 ounces. Hook selection is either 2/0 or 3/0 depending on the bait selection. For fiddler crabs Jay will use the 3/0 hook and for Sand Fleas (Mole Crabs) the 2/0 hook works best for the smaller crab.

Double Dropper Rig



When it comes to bait you'll always hear "Fresh is Best" and there's no exception for Sheepshead fishing. Live bait is the #1 choice and to keep them lively don't let them sit out in the sun. Keep your bait shaded and cool (not directly on ice).

For sheepshead, start by dropping your bait on the down current side of the piling. As the water flows around the pilings, it creates a low pressure area on the back side of the structure. In these "Eddies" the sheepshead can hang with minimal effort while they feed on barnacles, crabs, etc. Begin with your bait on the bottom and if there's no bites after a few minutes, reel in a couple of cranks. Keep working the water column until you find the depth the sheepshead are feeding.



Norfolk Anglers Club

www.norfolkanglersclub.com

Fishing Tips...

Jay shared the sheepshead bite is unmistakable and with braided fishing line an angler will feel everything the fish is doing to your bait. He cautioned about using too heavy a sinker weight, the heavier the weight the more difficult it is the "feel" the bite. Sheepshead have rows of molar-like teeth for grinding up crustaceans and barnacles (photo right). Often the sheepshead will begin grinding its teeth on the bait and an angler can sometimes feel their grinding before they take the entire bait. Sheepshead will usually hit a bait hard with a two thump strike.

Whether you're fishing for sheepshead or any of the other species in the bay, you'll need a light rod/reel combination. Jay favors a G-Loomis fast-action 6ft 6in rod, and explained between paddling and casting all day, you'll appreciate a lighter weight rod (not light weight) that has some length to it. The long rod length allows you to reach closer to the pilings when you can't get alongside them.



Another kayak fishing tip Jay (Wilderness Systems Pro Staff) recommends is after your hook set to keep you rod tip down and forward of the kayak's bow. He explained it's better to have the fish pull your kayak bow around than try to fight a powerful fish from the side. This is particularly true when fishing for bull reds or cobia. The large and powerful red drum or cobia can easily unbalance a kayaker if they're trying to fight it with their rod perpendicular to the kayak.



Photo Courtesy of Virginia Institute of Marine Science (VIMS), www.vims.edu



WILDERNESS SYSTEMS

Center Console fishing for Cobia

From late spring through early fall cobia is one of those species everyone wants to catch. They migrate into our area from wintering over off south Florida and can be found along the oceanfront or in the bay. Some anglers will entice them by anchoring and using chum and fish oil while others sight cast for them. Sight casting for cobia from an elevated position like a cobia tower mounted above the center console's helm gives a definite advantage to spotting cobia from a distance.

Jay shared it's tough to judge how a single cobia will react to the first bait or lure you cast to it. He recommends having a few additional baits and lures rigged and ready to cast if the fish rejects the initial bait. Sometimes they'll turn toward your bait to investigate only to turn away without even a strike at it. It could be the bait's presentation or the cobia isn't interested. Jay added, where it gets interesting is when you're casting on a group of cobia. There's going to be competition for food when there's multiple cobia swimming together and dropping an eel, bait fish, or lure in front of them will often generate a reaction strike. Once hooked up the other cobia will usually follow the hooked fish and will strike additional baits cast on them.

You'll find cobia early season coming up the coastline and off the oceanfront. During the summer they can be found swimming in the bay and often among the schools of cownose rays.



Find us on:
facebook®

Smoke Show Sportfishing

Norfolk Anglers Club

www.norfolkanglersclub.com

Fishing Tips...



The Chesapeake Bay Bridge Tunnel is another great location to target cobia. In Jay's experience, he's looking for cobia on the up current side of the pilings. His technique is to stand off from the bridge and cast to them, allowing the bait to flow with the current toward the cobia. Once hooked up be ready to work the fish away from the barnacle encrusted pilings and into open water. Under the strain of a powerful cobia your line won't last long rubbing against the pilings.

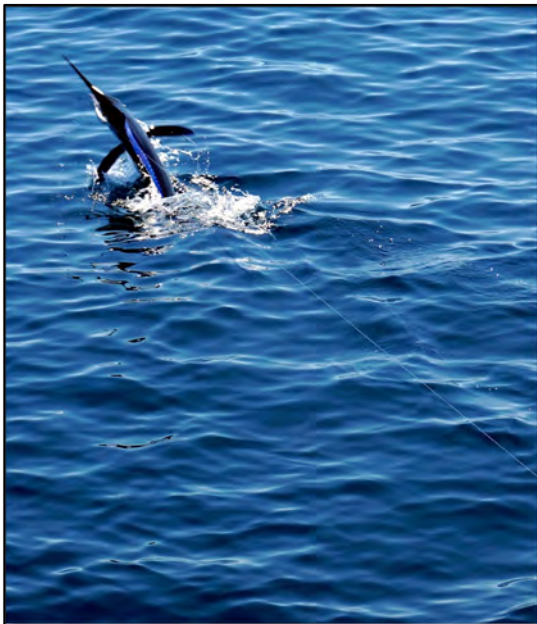
Jay rigs his cobia live bait (eels and bait fish) with 40-60# monofilament leader and tied to a 7/0 or 8/0 J-Hook or Circle Hook.

Billfish Addiction

Once you catch your first billfish, it's over, you'll be hooked on fishing for them for life. It will become your new addiction. Jay landed his first billfish while trolling with his 30' Contender off North Carolina and has been passionate about fishing them since.

He shared the key to fishing for white marlin is to spot them before they get onto your bait. He'll have 3 baited lines out and 2 teasers. The teasers will draw the attention of the billfish and get them coming toward your spread.

Jay places additional emphasis on teamwork when fishing for any of the billfish species. You need to have someone looking and locating the bait (tinker mackerel), an angler operating the boat, others working the teasers, and an angler prepared to handle the rod. Watching for the white marlin's approach to your spread is key. Their attention is often on the teaser and will stalk it as they move in. As the marlin get closer the teaser is brought in and the bait (live or dead bait) is put in a position for the marlin to attack it.



Fishing for white marlin doesn't require heavy duty reels like fishing for blue marlin or swordfish. For the smaller of the marlin species Smoke Show Sportfishing uses 80# monofilament or 60# fluorocarbon to a 8/0 Mustad 3951BLN In-Line Circle Hook. Rigging live and dead bait is done with a bridle rig, where a rigging needle is inserted through the bridge of the fish's head between the eyes and the nostril with a length of rigging floss. The in-line circle hook is then attached using the floss. Rigging a bridle allows for the in-line circle hook to be fully exposed and moving freely to make its hook-set. For live bait rigging troll at very slow speed (up to 3 knots) to allow the mackerel to swim for the most natural presentation. With dead bait rigging you can troll much faster (6.5 to 7.0 knots) and cover far more area.

The canyons off Virginia, more than 50 nm offshore, offer some of the best white marlin fishing along the eastern seaboard from mid-summer to early fall.



Norfolk Anglers Club

www.norfolkanglersclub.com

Fishing Tips...



Daytime Swordfishing

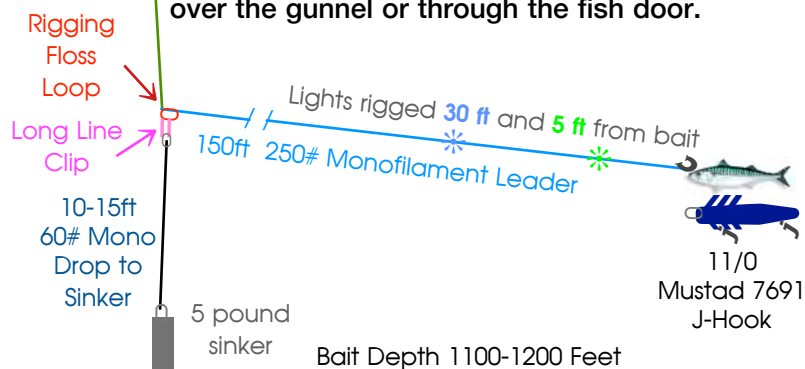
Jay will be the first person to acknowledge the contributions of the *Oceans East Bait & Tackle* staff, specifically Zach Bowles and Justin Wilson, for educating the angling community to daytime swordfishing opportunities off our coast.

Teamwork is something Jay highlights when talking about swordfish. Deploying the rig requires the boat operator to troll very slow while the rig is carefully lowered. With 150 feet of leader behind the boat, it's essential to allow the leader and bait to trail behind the boat. If lowered too quickly, the bait will rise to almost a vertical position and tangle with the main line.

What you'll end up with is a tangle mess 1200 feet down with a 5 pound sinker that won't catch anything. Coordination between the boat operator and the crew setting the rig is critical to getting the bait down without issue. Once you have the rig on the bottom, reel it up 75-100 feet. Your targeted fishing depth is 1100-1200 feet with your bait hovering around 100 off the bottom. Rigging deep drop lights 5 feet and 30-40 feet from the bait will help attract swordfish to your rig. Bait can be anything from a sewn up mahi belly, mackerel, or artificial lures.

Once you have your initial bite it's important to take in some line to mimic a fleeing bait from the swordfish. This action entices a follow up strike. Once the hook-set is complete it's all about the cranking.

The celebration isn't over until the fish is on the deck. Have a plan once the fish is alongside; to leader the fish, remove the weight, the gaff and/or harpoon work, and getting it over the gunnel or through the fish door.



Smoke Show

SPORTFISHING

www.smokeshowportfishing.com

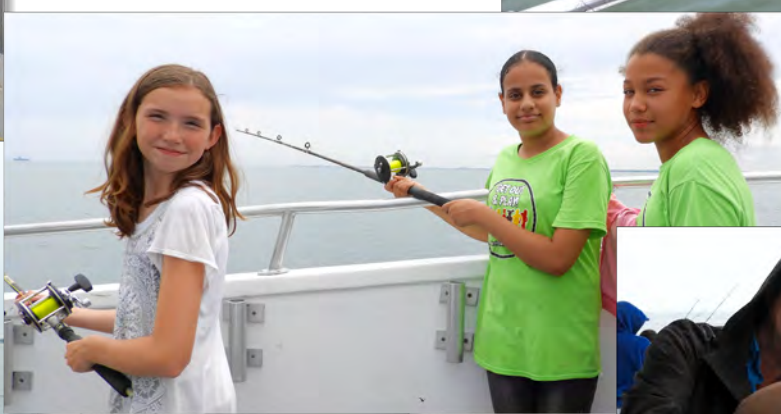
charters@smokeshowportfishing.com

757-301-0076

EOV COMMUNITY CENTER CHILDREN'S HEADBOAT TRIP & COOKOUT

This year's event was a little wet but a great success. The kids thoroughly enjoyed themselves. Many thanks to the NAC Anglers who were volunteers on the headboat: Greg Rogers, Alex Perex, Ike Eisenhower, Mike Hubert, Pau Harris, Bob Stuhlman, Ben Capps, Richard Lewis, Bert Sainz and Debbie Wright. Wendy Bransom, thanks for the colorful fun pictures! Thanks also to our Picnic Volunteers, Ned Smith, Mike Smith, Will Bransom, Mike Mancini and Angela Adams. Bert Sainz, thanks for bringing the lolly pops, the kids loved them! If it was not for these volunteers, this event would not have happened!







Fishing Reports...

18 August: Took a week vacation to 1000 Islands New York with Mary, my daughter, Jess, son-in-law, Tim and 4 year old granddaughter Blake. This resulted in our turning to the "Dark Side," AKA Fresh Water Fishing. We rented a house on the water and it had a boat garage, auto door opener and all.

We trailered our skiff and a couple kayaks up and fished every day. We could not believe how clear the water was, at 25 feet you could see the bottom. We caught lots of very nice Smallmouth Bass in the 3 to 5

pound range, and some small smallmouths on one day for dinner. All were caught on worms drifting a fast current over a rocky bottom with a standard top/bottom rig. Mary and I did try for walleye one morning but were unsuccessful. Beautiful mansions on most of the islands including the famous Bolt Castle which we visited by skiff. Weather was beautiful with temperatures of 60's at night and very low 80's during day. – Henry Troutner





1 August: I fished with Russell Willoughby for my birthday fishing time out of Lynnhaven Municipal Ramp at daybreak trying to catch the first slack tide. The wind was 15 out of North West, not what was predicted.

We started over the tube closer to the 2nd Island and within a few minutes, I had a nice fish hooked up. This surprised us both as we didn't even have the net out. Russell grabbed the smaller of the two nets that we carried onboard. I continued fighting this fish which seemed to get heavier and heavier with each crank of my reel. Once I got it up to the surface it was obviously a fish that needed the bigger net but Russell managed to get the fish in the net. It weighed out at about 5 and a half pounds on my digital scale but we were bouncing all over with the wind so we couldn't be sure.

At Oceans East it weighed 5 lb 4 oz. My biggest in almost 10 years. I fished with a jig on the bottom and a naked hook on top with white gulp swim tails on each. For now, this fish places me with the biggest flounder in the Virginia Beach Anglers Club Roulette Competition. Could be a money fish! Regardless it's a Prize fish for both Virginia Beach Anglers and Norfolk Anglers Clubs. Unfortunately, we didn't catch any keeper fish the rest of the trip despite having a good slack current on the incoming. - Dr. James W. "Ike" Eisenhower



BIRTHDAY

NAUTICAL TERM #189

on board:

Where smart boaters keep their Sea Tow card.

People who have a Sea Tow® member card in hand get served first. It's that simple. What's not simple is how it works when you don't have Sea Tow: huge out of pocket expenses, dollar and distance limits, and boat loads of reimbursement hassle. Find out how you're covered...then call us to join.

Sea Tow Hampton Roads
 757-496-1999 \ 800-4-SEATOW \ seatow.com
 Fishing Club Discount \$15 off



SEA TOW®



Sea Tow Services International, Inc. ©2012. All rights reserved.



2 August: After spending 6 hours fishing for flounder and getting only 3 flounder yesterday, I decided to take my nephew and friend Stephen Jay Friedman spot fishing. We had a nice catch with some at 10".

They are definitely getting bigger. There were some nice croakers too.
- Louis Glaser

23 August: I fished with Doug Wilburn in Little Creek for specks. We only caught 4 with the largest 21". All were caught on MR 27 Mirror lures. Let's hope for cooler weather. - Louis Glaser

9 August: I fished with Ike Eisenhower in Pretty Lake. We picked up some spot and croaker for some nice filets. They were all caught on night crawlers combined with fish bites. The Croaker are getting bigger.

- Louis Glaser



21 August: I caught a few fish on a weekday before the weather got too hot.
- James Robinson

Chic's Beach Rental & Fishing

*everything you need to enjoy the beach.....
..... & catch your dinner!!*

**Daily, Weekly & Monthly Beach Rentals
All Beach & House Accessories Provided
Beach Rental/Charter Fishing Packages**

www.chicsbeachrentalandfishing.com
grif4408@verizon.net
follow the fishing on facebook!

**Capt. Mike Griffith
USCG Licensed
757-687-9093**

2 August: We departed out of Owl Creek just before 7:00 am with Angela Adams, Andy Potvin, Mike Hubert, Greg Rogers, and Alex Perez aboard. We had a nice ride out to the Norfolk Canyon and set up for Golden Tilefish. The bite was slow to come around initially and after boating 8 nice sized Golden Tiles we decided to move south to an area we've fished for Blueline Tilefish.

Angela was the first to land a citation Blueline Tile weighing in at just under 13 pounds! Her first citation but not the only citations for the day. In about an hour we'd limited out with our 18 Blueline Tilefish ranging from just under 13 pounds down to 6 pounds.



We then headed back north to the Canyon to drop in deeper water and target the larger Golden Tilefish. We used a typical two dropper fishing rig but "upsized" for the larger tiles. My deep drop rigs are put together with 200# leader with two 14" drops spaced 3 ft apart with Mustad UltraPoint 9/0 Demon Circle Hooks. On the



the sinker end I'll crimp at 75# coastlock swivel for the weight and use a spring chafe protector on the other end. I'll also add a couple of glow beads and a sleeve over the eye in the hook. This sleeve provides chafe protection for the first 3 inches of the leader. The final touch is an optional light added at the mainline swivel. As a friend of mine once said "Big Hooks, Big Bait, Big Fish". So, don't be shy about using a large bait, just remember to don't overdo it and leave enough hook point exposed to work to the fish's jaw line.



Once back in the Canyon we set up in deeper water and it was Game On! The Golden Tiles were averaging 25 pounds to Alex's 36 pound 10 ounce citation. We boated another 8 big Golden Tiles and 14 Blackbelly Rosefish up to 3 1/2 pounds.

Total for the day: 16 Golden Tilefish, 18 Blueline Tilefish, and 14 BlackBelly Rose Fish. After cleaning the fish all of the tilefish carcasses were donated to VMRC's Marine Sportfish Collection Project.

- Will Bransom



Ever wonder what the bottom looks like when fishing for Blueline Tilefish? During our trip I dropped my Intova Connex underwater camera down to 300 feet with one of my dive lights. There's small broken shell, silt, areas that have depressions, and a few starfish can be seen.





28 July: Ned and Bert Sainz invited me to go fishing with them. We started the day netting bait by the Marina and then headed out for flounder. Bert started the day with a nice 20" and I followed shortly thereafter with another 20". Ned took his time that day and let Bert and me do the catching. I ended my day with a 19" and 1 throwback. The guys filled in the rest of the catch.....5 keepers. Great day on the water.....GIRL POWER!!!
- Michel Smith



24 August: Henry Troutner and I volunteered to take a couple of troops fishing on my boat Magic Carpet Ride as part of Military Appreciation Day (MAD). Initially, we had 2 troops scheduled but one had to cancel.

The Marine we took was Jairr, he was an avid and experienced fisherman. Henry and I found him fishing the seawall at Bay Point Marina when we got there. Anyone that was there that day knows it was very rough with a small craft advisory. We fished anyway!

We came up with a plan to fish the sheltered waters of Pretty Lake but we couldn't get out of the inlet. We rounded the corner and saw it was too rough but put out a planer rig anyway. We did manage 3 spanish (2 Keepers). There were hundreds of ribbonfish everywhere which readily took the spoons, we either trolled or cast to them. Jairr said they were good eating so we kept about a dozen. The day was a good one, we caught spot, croaker, puppy drum and small seabass too. - Mike Hubert



18 August: I went fishing with my friends Taylor Lyne and Taz Humphrey at the CBBT on a nice morning. We ended up with 8 flounder, most caught jigging.

- Louis Glaser

Virginia Printing & Signs
Division of JAMMAC Corporation



Brian A. Getz

Tel: (757) 855-5474 • Fax: (757) 855-5748

Email: virginiaprinting@aol.com

6610 E. Virginia Beach Boulevard • Norfolk, Virginia 23502



16 August: I decided no spot fishing on this day, going for Flounder with Bert Sainz at CBBT. We ended up with our limit jigging using Cobia belly.
- Louis Glaser

15 August: Andy Potvin, Gregg Rogers, Henry Troutner, Angels Adams and I went out sheephead fishing as a primary target. We were going to fish the pilings between the 2nd and 3rd Islands. When we got to the bridge we found water running too fast to fish in so we went to the old stand by-pulling # 1 and #2 old salty planers and 00 or #1 drone spoons on one and a #1 gold clark squid in the tide rips around the Islands.

Our rigs were a ball bearing barrel swivel at the planer with a leader of 25 or 30 #mono line tied directly to the spoon. We had great success trolling! There was a steady bite of nice spanish mackerel and bluefish while we waited for the current to slow. At the 3rd Island, Andy hooked and landed a 35" striped bass on the #2 planer which was a great surprise and hopefully a good omen for the up coming striper season! Once the tide slowed, we started bottom fishing with less success but still caught some fish. We managed some keeper fish though: 1 sheep, 1 tautog 17.5", 1 flounder 17.5" and a couple of spadefish. All in all it was a great day on the water!
- Mike Hubert



Mid August: *San Diego 3 Day Open on the Shogun* - After three years, I finally had time to be in San Diego for two weeks again. I knew I had to get back into the long range tuna fishing. I called Steve and he recommended the Shogun 3 day as the trip I should look into. We met up for the Catchy Tackle 8 day on the American Angler 3 years ago.

Technically, this was not really a long range trip due to the hot local yellowfin bite. I am in the middle of transitioning out of the Navy and needed some time to forget about past and future and simply live the moment. I had three goals for this trip and checked off all three.

These were not monsters, but it was a fun trip for all involved.

1. *Land a bluefin* - I hooked one on my first trip, but it got bit off.

2. *Land a yellowtail on surface iron* - I had boils on my first trip, but never hooked one.

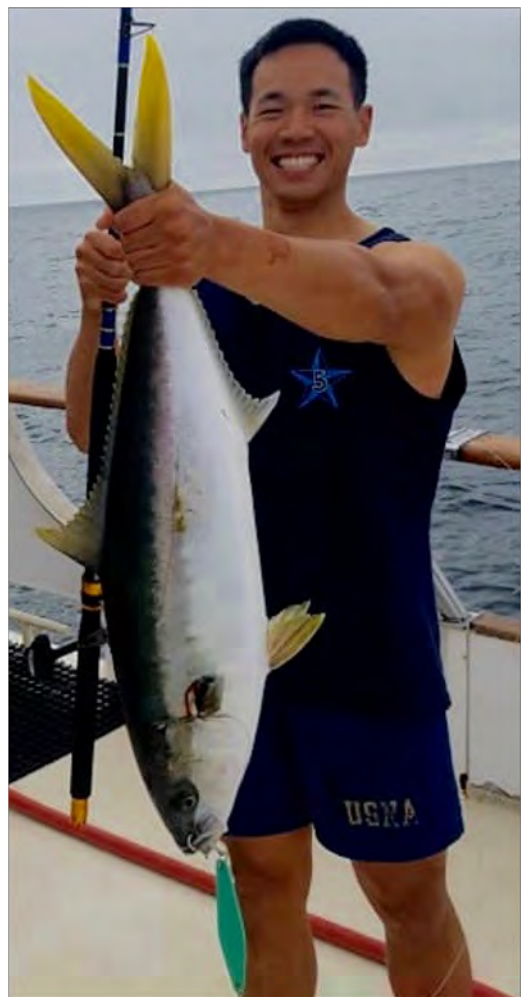
3- *Get a yellowfin to hit topwater* - This to me was the highest tier of game fishing.

I tried to do a lot of gear prep, especially since I flew in from Maryland. I learned that you really can't plan too hard; trust the advice at the dock and get the right stuff the first time.

I went on a day trip on the San Diego on August 11, and skunked, so did half the crew. We found fish, but they were being super finicky!

I had a positive impression of the boat after finding out they were loaded up gas and bait prior to picking us up from Fisherman's Landing. We all boarded and settled in 30 minutes later. We were on the hunt sometime 3 hours after leaving the dock. We found fish near the rest of the fleet and started to fish. I noticed that fish don't seem to bite on the first line of drift, but really picked up on my second soak. I used my 6' custom built UC Challenger Extreme Jigging Rod with a Daiwa Saltist 30LD with 100 yds of 25# mono to 40# braid backing. I rigged up a short 25# fluoro leader to an Owner No. 2 Mutu Circle. This setup landed 11 schoolie yellowfin for me on the first day. Most anglers did well and a few limited out on that nice 3 hour drift. Some schoolie bluefin were in the mix and hit the same weightless setup. Some guys used sliding sinkers or droppers, I am not sure

if that really worked on the bluefin on this trip. I retied my hook after every fish because I feel like 25# fluoro is not forgiving with abrasion.



The second day was focused on kelp patties for potential yellowtail. The Captain found one early and we were on fish! I kept throwing the surface iron on my 7' 8" spinning setup rigged with a mint Tady 45. This lure was given to me by another fisherman on the San Diego who told me to get them after I told him of my 3 goals for this trip. Unfortunately, I do not remember his name, but I think I made him proud with that lure. If you are on BD, please PM me. I had several boils, but 0 hookups on this kelp. The rest of the crew were hammering yellowtail from 5-12# pretty hard in the back on sardines. The second kelp was a 0. The third kelp was another winner. After a dozen casts on the surface iron, I landed 2 yellows on the mint Tady 45. Goal 1 is checked off.

On the long soak, I saw the mono disappear off my reel and shiny yellow braid starting singing off the spool. Other anglers warned me that bluefin were unpredictable during the fight. Sure enough, this fish became dead weight after being hooked. Three seconds later, it charges at the boat. I cranked in about half of my mono. After being shuffled by the mate to the bow corner, the fish runs again. Two minutes later, it is straight up and down. I slowly worked it up and the fish decides to run again. With 8# of drag on a single speed with a 6.3:1 gear ratio, I finally realized how hard it is to crank. Sometime 10 -15 minutes later, the mate sinks the gaff into the fish and the deed was done.

That was my first bluefin! The Owner Mutu hook was slightly bent. I took a bite of the tuna heart and some pics. On the next soak, I landed another yellowfin. I finished that day with 2 bluefin and 2 yellowfin. There was a hot bite right before sunset. One of my yellowfins was lost at the gaff and got snagged by another angler. Since he brought it in, I think it belongs to him. I call it a half catch. Goal 2 - check!

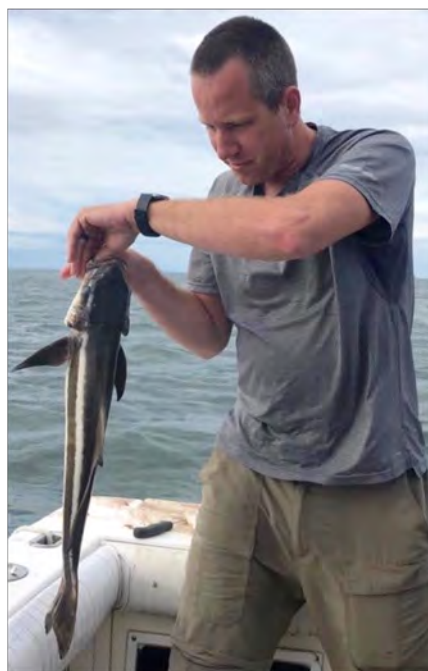


For the last day, we looked for kelp and yellowtail with 0 luck. Three hours of active searching, we returned to targeting tuna. I got lucky and hooked a bluefin on another long soak. This fish took me into 3 tangles and around the boat.

Nevertheless, it came home. Most of us limited out in the early afternoon. I got another bluefin. Right before the Captain decided to look for yellowtails again, I starting flinging a metal jig similar to a Colt Sniper. I threw a 2 oz Big Nic Spanish Candy (small lure maker based out of Wilmington, NC). I figured eventually it will land near a boil since the boils were concentrated off the corner. Sure enough, 30

or so casts later, I hooked one. Everyone saw the boil and the hookup. It was just another schoolie, but that was amazing! We went yellowtail hunting with limited success. Goal 3 - check!. - Brian Tsai

24 August: MAD Fishing Event: Curiosity almost killed this cobia. She was a few inches short (36 incher) and was released. While at anchor with a chumming setup in play, a pair of undersize cobia decided to circle our boat. They ignored the bottom baits, followed a hooked roundhead to the surface, ignored the free-lined chunk baits, ignored the live croaker, but fell victim to my orange cobia bucktail snap jigged 5' under the surface. Her smaller male suitor was quite a gentlemen and let her eat my jig. Sometimes, it's just amazing to play and observe with these fishing scenarios. Thanks to CAPT Jack Bartell for this interesting trip. We all got our share of hooking cownose rays and C&R on 2 dink cobia. - Brian Tsai



19 August: I decided to try my new Shamono spinning reel that Don and Zack helped me decide on at Ocean East. These guys are extremely helpful with all your fishing needs. I decided to speckle trout fish in Little Creek and ended up with my limit with the largest being 23" and 27". Justin Wilson @ Ocean East weighed it at 6 lbs. All fish were caught on MR 27 mirror lure. Ocean East has the best selection of Mirror lures. - Louis Glaser



24 August: 0800 - With the winds howling and the seas angry Capitán Alex and I joined up with our Military Appreciation Day Anglers at Cobbs Marina. We had Mike James, and two more Alex's join us and off we went. Initially trying out the Little Creek jetties for speckled trout, the winds made casting a challenge so we headed off to the Chesapeake Bay 1st Island. Using the island to shield us from the winds and seas we fished the lee side for flounder and only caught a few (2) oystertoads. We then set up the troll and started landing spanish mackerel and bluefish. After making more than a few runs up and down the CBBT, we headed back for Little Creek. Again trying the jetties we boated ribbon fish and a lizard fish. Our final stop was Pretty Lake where the guys worked on the croaker and spot. They also caught a pigfish, the smallest oystertoad I've ever seen, and loads of croakers and spot.



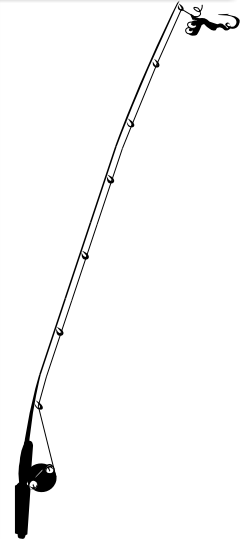
Capitán Alex and I were very proud to take these guys fishing and appreciative of their service and sacrifices serving our Nation. We're already looking forward to next year's MAD-Tidewater event! - Will Bransom



28 August: Henry Troutner, Greg Rogers, Andy Potvin and I went out to target sheepshead again. We had sand fleas and fiddler crab for bait. We went to the 3rd Island to start and found the current running hard and waves too big to fish the way we knew how. Therefore, we trolled spoons for spanish and blues which is most of the time a guarantee. This day was an exception only in that the bluefish were a little bigger (up to 5 lbs) and EVERYWHERE! We caught them at will and kept a bunch to give away to friends and neighbors. After trolling, we started casting to the rocks with wind cheaters and other plugs! The water was very clear and the fish could be seen chasing and fighting over the lure when one was hooked. I think it is some of the most exciting fishing there is!

I caught two blues on the same lure on the same cast on my first cast of the day! That happens regularly enough to not be a surprise but a treat none the less! A little later Greg caught two on the same lure too but one twisted the back hook off before I could get a photo of it! We went to the Cape Henry Wreck to try our luck there but the current was too swift and we wound up only losing rigs. Then we went to some piles north of the 2nd but the water was still too fast, then we anchored over the tube at the 2nd and Henry caught 3 sheepshead and Andy (his first ever) caught one too even though the current was still rolling.

- Mike Hubert



30 August: We departed out of Wanchese Marina with *Stolat Fishing Charters* aboard their 42' Topaz. Will Bransom, Mike Hubert, Andy Potvin and myself drove down that morning for an early departure and fish the last days of Blueline Tilefish season in North Carolina. We met early and were greeted by Captain Paul Lesiewicz, his Father Paul Sr., and our Mate Scott.



As we exited Oregon Inlet we were met with calm seas, a light winds, and clear skies. We had a 2 hour transit to the fishing area with only one other boat in sight. The area we were fishing was approximately 200 feet deep and with a firm bottom. Our fishing gear were double dropper rigs tied with 40-80# monofilament line and rigged with 4/0 and 5/0 Red Circle Hooks. Our Mate Scott kept us rigged up with plenty of cut bait. It wasn't long after the rig hit the bottom that it was "fish on"! Soon we were boating Blueline Tilefish in the 4-6 pound range with a few larger fish. With light winds our drift was minimal so Captain Paul would reposition occasionally to have us cover more of his tilefish area.

In the distance our Captain spotted some floating debris and let us know he was seeing a school of Mahi underneath it. As we drifted closer a sizable school of bailer mahi were drawn close with the Mate baiting them with cut fish. A number of us switched rigs and started hooking into the mahi and for a while it was sheer craziness with fish coming over the rail non-stop. A few others in the group kept on the the tilefish bite and kept bringing in the bluelines. It was a great example of well orchestrated chaos with Mahi slinging in the boat with blueline mixed in. A great job by our Mate Scott for keeping the chaos organized.

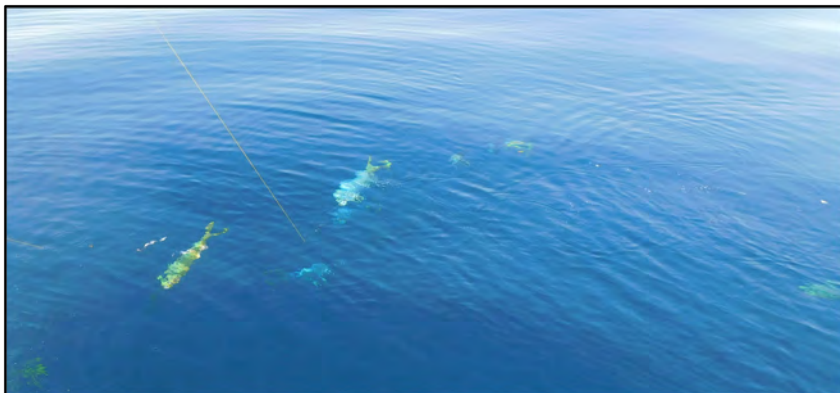
We also ran into an occasional large shark or two around the boat as well as a couple of curious barracuda close by. Paul Sr. hooked into one the large sharks for a while until it bit through the mono leader.

We soon had enough Blueline Tilefish and Mahi in the boat so we set out the trolling gear in the hopes of hooking into a wahoo or large Mahi. While we didn't hook a wahoo, we did get a nice gaffer sized Mahi before we called it a day and headed back to Wanchese.

Well done to Mike Hubert for landing not one but two North Carolina Saltwater Citation Blueline Tilefish! Similar to the Virginia Game Fish Tournament a 10 pound or greater Blueline Tilefish can be registered for a Saltwater Citation.

Many Thanks to Mike Hubert for organizing another great fishing trip to the Outer Banks and to the entire Stolat Crew for making it such a great day!

- Greg Rogers





30 August: Fished with Doug Wilburn on a nice afternoon in Little Creek. We ended up with 4 keeper flounder, 2 specks and a lot of throw back puppy drum. Flounder were on 4" swimming mullet chartreuse gulp.
- Louis Glaser



28 August: I fished with Jeremiah VanZileand and his friend John Hamilton in Little Creek. We ended up with 8 keepers and some throwback reds. They were caught on Mirror Lures and rubber baits.
- Louis Glaser

27 August; I fished with my friend Jerry Gaines in Little Creek. We left dock at 11 am and end up with 7 keepers and lost 3 at boat. All caught on mirror lures. It was our maiden voyage. - Louis Glaser



29 August: I was looking for trout in Lynnhavenn, I only got these little pups. I'm waiting for them to grow up. All were 14"- 15" in the river. - Jimmy Robinson

Angler Interests

Little Creek Inlet Restricted Area Effective September 9, 2019:

August 8, 2019
CENAO-WR-RS
NAO-2016-00332

PUBLIC NOTICE

The District Engineer has established a restricted area in waters surrounding Joint Expeditionary Base Little Creek-Fort Story:

APPLICANT

Commanding Officer
Joint Expeditionary Base Little Creek-Fort Story
2600 Tarawa Court, Suite 100
Virginia Beach, Virginia 23456-3297

WATERWAY AND LOCATION OF THE RESTRICTED AREA: The restricted area has been established within Fisherman's Cove and Little Creek Harbor adjacent to Joint Expeditionary Base Little Creek-Fort Story, Little Creek (JEBLCFS) in Virginia Beach, Virginia.

ACTION: Establishment of a restricted area published at 33 CFR §334.305 "Little Creek Harbor, Fisherman's Cove, Joint Expeditionary Base Little Creek-Fort Story, Little Creek, Virginia, Restricted Areas."

This regulation, promulgated by the Corps of Engineers, Norfolk District prohibits certain activities from being conducted within the restricted areas at certain times without prior authorization.

AUTHORITY: Pursuant to Section 7 of the Rivers and Harbors Act of 1917 (40 Stat. 266; 33 U.S.C. 1) and Chapter XIX of the Army Appropriations Act of 1919 (40 Stat. 892; 33 U.S.C. 3), the District Engineer has authorized the establishment of restricted areas in waters of the United States adjacent to JEBLCFS within Fisherman's Cove and Little Creek Harbor in Virginia Beach, Virginia as follows:

THE REGULATION: 334.305 Little Creek Harbor, Fisherman's Cove, Joint Expeditionary Base Little Creek-Fort Story, Little Creek, Virginia, Restricted Areas.

(a) The Little Creek Restricted Areas. The Little Creek Restricted Areas consist of two distinct areas: The Outer Harbor Restricted Area and the Inner Harbor Restricted Area.

(1) The Outer Harbor Restricted Area. The waters within an area beginning at latitude 36°55'57.7" N, longitude 76°10'35" W; thence southwesterly to a point at latitude 36°55'53" N, longitude 76°10'44" W, thence southerly to latitude 36°55'21.2" N, longitude 76°10'42" W; thence southwesterly to latitude 36°55'18.3" N, longitude 76°10'49" W; thence northwesterly to a point in Fisherman's Cove at latitude 36°55'22" N, longitude 76°11'15.5" W; thence southerly to latitude 36°55'19.2" N, longitude 76°11'16" W, thence easterly near the southern shoreline of Fisherman's Cove, to latitude 36°55'15.8" N, longitude 76°10'58.8" W; and ending at latitude 36°55'18" N, longitude 76°10'30" W; thence to the point of origin.

(2) The Inner Harbor Restricted Area. The waters within Little Creek Harbor south of a line beginning at latitude 36°55'15.8" N, longitude 76°10'58.8" W; and ending at latitude 36°55'18" N, longitude 76°10'30" W.

(b) The regulations.

(1) The Outer Harbor Restricted Area. All privately owned vessels, properly registered and bearing identification in accordance with Federal and/or State laws and regulations, and all Government owned vessels (public vessels) may enter or exit the waters described in subparagraph (a)(1) at any time and transit inbound/outbound of the marked dredged channel leading to Little Creek Harbor between jetties 8 miles westward of Cape Henry Light. All vessels transiting inbound/outbound of the channel except as noted in subparagraph (c)(2) shall proceed at speeds commensurate with minimum wake. Any vessel equipped with a marine radio can monitor VHF-FM channel 12 for message traffic from Little Creek Port Control.

When Commanding Officer, Joint Expeditionary Base Little Creek-Fort Story is ordered to implement Force Protection Conditions (FPCONs) Charlie/Delta, or when specific authority is granted by the District Engineer, all vessel traffic movement can be restricted except for those vessels in paragraph (c)(2). FPCONs are a system of protective measures used by the Department of Defense (DOD) installations to guard against and deter terrorist attack. Senior commanders assign the FPCONs for their region, and installation commanders may raise FPCONs and tighten security measures based on local conditions. In the event FPCONs Charlie/Delta is implemented by the Commanding Officer, Joint Expeditionary Base Little Creek, which requires the restriction of vessel traffic movement in the Outer Harbor Restricted Area, the installation will coordinate with the U.S. Coast Guard, Fifth District; Army Corps of Engineers, Norfolk District; state and local law enforcement and governmental authorities; to disseminate information to the public and local news media outlets. Information on whether vessel traffic movement has been restricted in the Outer Harbor Restricted Area due to the implementation of FPCONs Charlie/Delta will also be published and disseminated by the U.S. Coast Guard.

Angler Interests

(2) The Inner Harbor Restricted Area. All vessels or persons intending to transit inbound/outbound of the Inner Harbor Restricted Area shall request permission from Little Creek Harbor Port Control using VHF-FM channel 12 prior to transiting and will provide their destination/ intentions with the exception of those listed in paragraph (c)(2) below. The Inner Harbor Restricted Area is restricted to those privately owned vessels or persons calling upon the commercial/private piers located within the Inner Harbor and Government owned vessels (public vessels) transiting to and from U.S. Navy or U.S. Coast Guard facilities and authorized DOD patrons of the U.S. Navy recreational marina. No other vessels or persons may enter or exit this area unless specific authorization is granted by Commanding Officer, Joint Expeditionary Base Little Creek-Fort Story, and/or other persons or agencies as he/she may designate.

(3) All vessels or persons transiting inbound/outbound of the Inner Harbor Restricted Area are subject to all applicable federal and state laws including laws or regulations designed to protect the naval facility and persons or vessels assigned therein. Federal and state law enforcement officials may at any time take action to ensure compliance with their respective laws. In addition, this regulation authorizes Navy security personnel, designated by Commander, Joint Expeditionary Base Little Creek-Fort Story or persons authorized to act in his/her behalf, the authority to ascertain the identity and intent of any vessels and/or persons transiting the restricted area that indicate by way of appearance or action they are a possible threat to government assets. If a determination is made that the vessel and/or persons are a threat to government assets located within the restricted area, Navy security units may take actions as provided by law or regulation that are deemed necessary to protect government personnel and assets located within the restricted area.

(c) Enforcement.

(1) The regulation in this section, promulgated by the U.S. Army Corps of Engineers, shall be enforced by the Commanding Officer, Joint Expeditionary Base Little Creek-Fort Story, U.S. Coast Guard, local/state law enforcement, and/or persons or agencies as he/she may designate during emergency situations.

(2) Federal and state law enforcement vessels and personnel may enter anywhere in the restricted area at any time in the operation of their statutory missions or to enforce their respective laws.

(3) Nothing in this regulation is deemed to preempt 33 CFR 165.501

(4) Vessels or persons calling upon the commercial/private piers located within the Inner Harbor with proper identification and clearance will be allowed entry subject to the same provisions described in Section 334.305(b). Commanding Officer, Joint Expeditionary Base Little Creek-Fort Story reserves the right to temporarily deny entry in emergency situations, elevated DOD FPCONs in the Harbor, or other safety of navigation constraints.

EFFECTIVE DATE: September 7, 2019

DURATION: This order shall remain in effect until changes or formal regulations are developed.

CONTACT INFORMATION: For the latest information regarding the restricted area modification contact Nicole Woodard, Corps of Engineers Regulatory Branch at 757-201-7122 or check the website at <https://www.nao.usace.army.mil/Media/Public-Notices/>. For permission to enter the area contact Little Creek Harbor Port Control using VHF-FM channel 12 or for information regarding technical issues associated with the restricted area, contact The Executive Officer, Joint Expeditionary Base Little Creek-Fort Story, 2600 Tarawa Court, Suite 100, Virginia Beach, Virginia 23456-3297.

FOR THE DISTRICT ENGINEER:

William T. Walker
Chief, Regulatory Branch



Angler Interests

Emergency Measures reduce Fall Striped Bass Recreational Possession Limit



August 27, 2019: At their August meeting the Virginia Marine Resources Commission unanimously approved emergency regulations that will limit fishermen to a single fish between 20 and 36 inches long per day during the coming fall recreational season.

Anglers were previously allowed to keep two fish: one between 20 and 28 inches and one allowed to exceed 28 inches with no maximum size.

The Commission also approved restrictions that establish a maximum gill net mesh size of 9 inches in the coastal commercial fishery and 7 inches in the Chesapeake Bay fishery.

The Commission voted to advertise for a September Public Hearing to amend Chapter 4 VAC 20-620-10 et seq., "Pertaining to Summer Flounder," to establish the Fall 2019 Commercial offshore (Federal Waters) summer flounder management measures.

Public Hearing for ASMFC Interstate Management Plan for Striped Bass



Arlington, VA – The Commission's Atlantic Striped Bass Management Board releases Draft Addendum VI to Amendment 6 of the Interstate Fishery Management Plan for Atlantic Striped Bass for public comment. Atlantic coastal states from Maine through North Carolina, including Pennsylvania, the District of Columbia, and the Potomac River Fisheries Commission, have scheduled their hearings to gather public input on Draft Addendum VI.

The ASMFC Public Hearing in our area;

September 9, 2019 at 6:30 PM
Virginia Marine Resources Commission
380 Fenwick Road, Fort Monroe
Hampton, Virginia

Draft Addendum VI was initiated in response to the 2018 Benchmark Stock Assessment, which indicates the resource is overfished and experiencing overfishing. The Draft Addendum explores a range of management alternatives designed to end overfishing and reduce fishing mortality to the target level in 2020.

The Draft Addendum proposes management options for both commercial and recreational sectors in the ocean and in Chesapeake Bay in order to reduce total fishery removals by 18% relative to 2017 levels. The proposed measures include reduced quotas for commercial fisheries, and changes in bag limits, minimum sizes, and slot size limits for the recreational sector. Since catch and release practices represent a significant component of overall fishing mortality, the Draft Addendum also explores the mandatory use of circle hooks when fishing with bait to reduce release mortality in recreational striped bass fisheries.

Marine Sportfish Collection Program



Attention saltwater anglers: The Virginia Marine Resources Commission wants your fish carcasses. You catch it, you fillet it, but instead of throwing the remains in the trash, please donate them to science. Anglers are asked to donate their filleted carcasses (head and tail intact) of fresh-caught Bluefish, Cobia, Sheepshead, Spadefish, Spanish Mackerel, Speckled Trout, Red and Black Drum, Tautog, Tilefish and Grouper.



OFFICIAL SPORTFISH COLLECTION PROJECT STATION

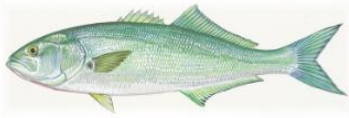


VMRC WANTS YOUR FISH....TO MEASURE AND AGE.

*You catch it, you fillet it,
but instead of throwing the remains in the trash,
please donate them to science.*

The Marine Sportfish Collection Project will focus on species of fish that are difficult to collect through the agency's normal sampling program. Anglers are asked to donate their filleted carcasses (head and tail intact) of legal and fresh-caught:

BLUEFISH
(GREATER THAN 36 INCHES)



TAUTOG



COBIA



RED DRUM



SHEEPSHEAD



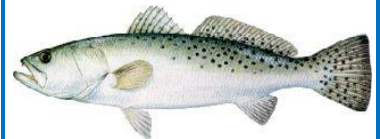
SPADEFISH
(GREATER THAN 12 INCHES)



SPANISH MACKEREL



SPECKLED TROUT
(SPOTTED SEATROUT)



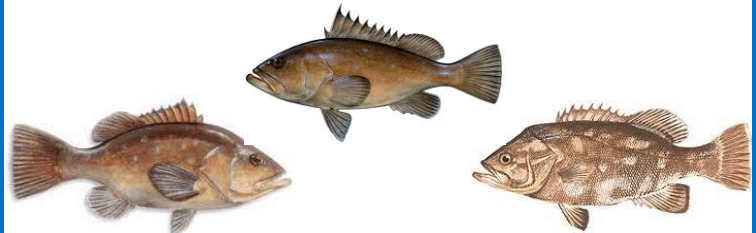
BLACK DRUM



TILEFISH
(BLUELINE OR GOLDEN)



WRECKFISH, SNOWY GROUPER,
WARSAW GROUPER



In return for participating in the project, the agency will provide:

**ONE FREE PROJECT TEE SHIRT or HAT, FOR EACH
PARTICIPANT PER MONTH of the DONATION.**

